

# MINITRIKE

BY



## Installation Manual

### Honda Reflex

# Limited Warranty

TOW-PAC, INC. warrants to the first end user purchaser that this product "MiniTrike" when purchased will be free from defective workmanship and materials, and agrees that it will, at its option, either repair the defect or replace the defective Product for the period of one year from date of original purchase.

This warranty does not apply to tires or to the appearance of any item which has been damaged, defaced, been subjected to misuse, or which has been altered or modified in design or construction.

Neither the sales personnel of the seller nor any other person is authorized to make any warranties other than those described above or to extend the duration of any warranties beyond the time period described above on behalf of TOW-PAC, INC.

## **NOTICE OF LIMITED LIABILITY**

Tow-Pac, Inc. warrants *only* components supplied by Tow-Pac, Inc. Tow-Pac, Inc. cannot be responsible for any components on owners motorcycle including frames, hardware, aftermarket accessories, etc. Owner is solely responsible for ensuring motorcycle is in sound mechanical order. Tow-Pac, Inc cannot be responsible for any damage due to improper installation of Tow-Pac components or use of any hardware (bolts, nuts, etc) on Tow-Pac components not supplied directly by Tow-Pac, Inc. Owner is solely responsible for installation of Tow-Pac components. Please refer to limited warranty for warranty details.

# Notice

***After your MiniTrike is installed, take some time to get used to “Trike” handling characteristics.***

- On a Trike you will ***steer*** rather than ***lean*** as you would on a conventional two wheel motorcycle.
- Take corners ***very slowly*** until you get used to the feel of cornering on a Trike.
- Remember to use your front brake in tandem with your rear break. This will greatly increase your stopping power when in Trike configuration.
- With MiniTrike installed remember the outrigger wheels. Use caution not to run them into objects.
- Keep your feet up at all times.

# **Important Notices**

- ***MiniTrike is designed for use on paved surfaces only. Use of InstaTrike on unpaved terrain may void warranty.***
- ***When installing MiniTrike attach all bolts and brackets loosely. After all bolts and brackets are in place tighten all bolts.***

# Installation Checklist

- Review entire installation manual**
- Remove side covers and rear fender**
- Locate and drill (2) frame holes**
- Install MiniTrike and double check all bolts**
- Replace rear fender and side covers**
- Align MiniTrike wheels**
- Double check all bolts for tightness**
- Test ride MiniTrike slowly in an open area to familiarize yourself with handling characteristics**

# MiniTrike Installation

**NOTE: *Install all bolts loosely until all brackets are in place. Tighten bolts only after all brackets and bolts are in place***

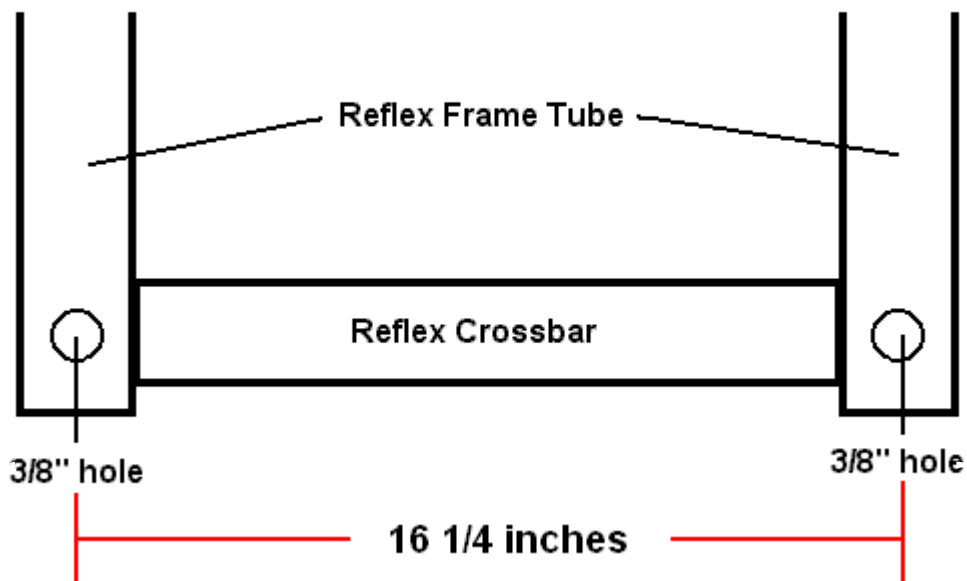
***Refer to figure 3 for bracket identification***

1. Remove the side body panels and rear fender
2. On rear of scooter frame locate area where crossbar intersects right and left main frame tubes. Drill 3/8 inch hole through the middle of right and left frame tubes in alignment with crossbar. Drill hole completely through frame tubes. **Holes must be 16¼ inches from center to center.** See figure 1

***Important Note: Use care to drill hole as straight (vertical) as possible***

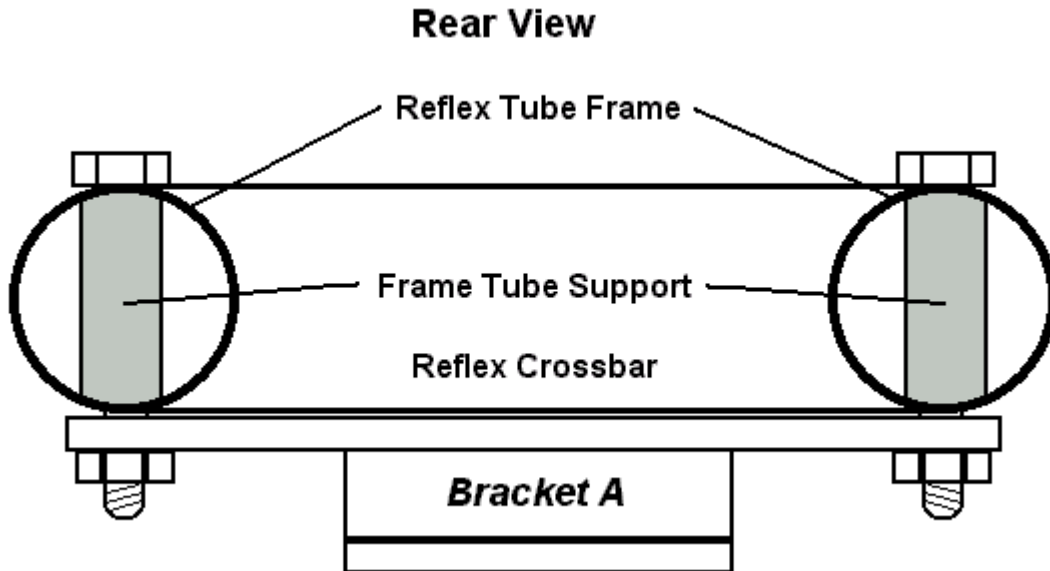
***Figure 1***

**Top View**



3. Place frame tube supports into rear frame tubes with supplied bolts through frame tube and support. Attach bracket **A** to bottom of bolts. See *figure 2*

**Figure 2**



4. Attach top of brackets **C** (left side) and **B** (right side) to bracket **A**.
5. Place Reflex on side stand and remove center stand with rotation bushings.
6. Mount brackets **D** to centerstand bracket using existing bolts and nuts.
7. Attach torsion axles and wheels to axle plates and roll MiniTrike into position.
8. Attach bottom of brackets **B/C** to rear plate on MiniTrike U-frame.
9. Attach bracket **E** (left) / **F** (right) to **BOTTOM** of forward mounting points on MiniTrike U-frame. Attach other end of **E/F** to **BOTTOM** of mounting points on bracket **D**.

10. Scooter will be in an upright position now. Begin tightening bolts in the following order.

A) Tighten bolts from bracket **A** to scooter frame

**NOTICE: TIGHTEN BOLTS UNTIL SCOOTER TUBE FRAME IS COMPRESSED AGAINST TUBE FRAME SUPPORTS**

B) Tighten bolts from brackets **C** and **B** to bracket **A**

C) Tighten bolts from brackets **C** and **B** to U-frame

D) Tighten bolts from brackets **E** and **F** to bracket **D** and forward attaching point on U-frame.

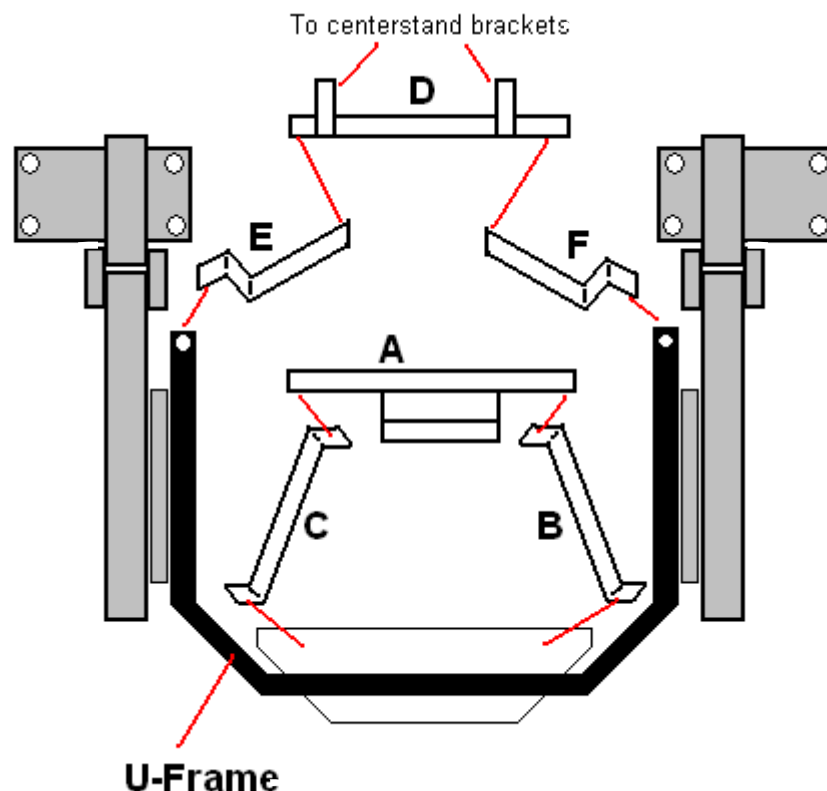
E) Tighten bolts from bracket **D** to scooter center stand mounting bracket.

11. Replace rear fender and side covers.

12. Align MiniTrike Wheels see *wheel alignment page* Torque axle bolts to 40 pounds after alignment

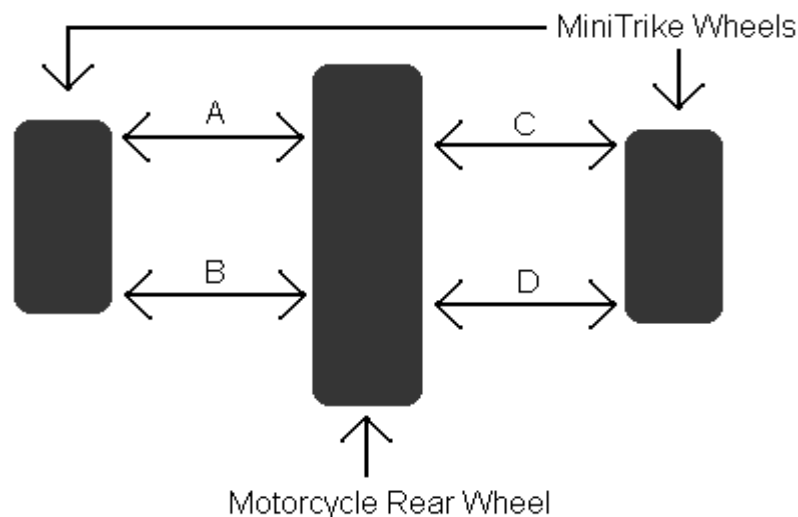
**NOTE: After installation, U-frame will be offset from center about 1 inch.**

**Figure 3**



# Wheel Alignment

*Wheel alignment is critical for proper tire wear and handling.*



***Top View***

With MiniTrike installed measure **A** and **B**. Loosen axle plates and align wheel so **A** and **B** are equal to within 1/16<sup>th</sup> of an inch. Tighten axle bolts and torque to 45 pounds. Repeat for **C** and **D**.

***NOTE:*** *The measurement of A and B may not be the same as C and D. This is normal and presents no difficulty.*

## **Wheel Height / Traction Adjuster**

The wheel height/traction adjuster (right and left side) allows you to selectively adjust the position of your trike wheels in order to customize ride, handling, level, and traction characteristics. Your trike is shipped with the adjuster preset to an optimum position for your model of motorcycle however you can make whatever adjustments necessary to customize to your bike and personal preference.

**Shortening** the adjuster arm **raises** the trike wheels and places more of the weight of your motorcycle on the motorcycle wheel. This increases motorcycle traction and gives a generally softer ride.

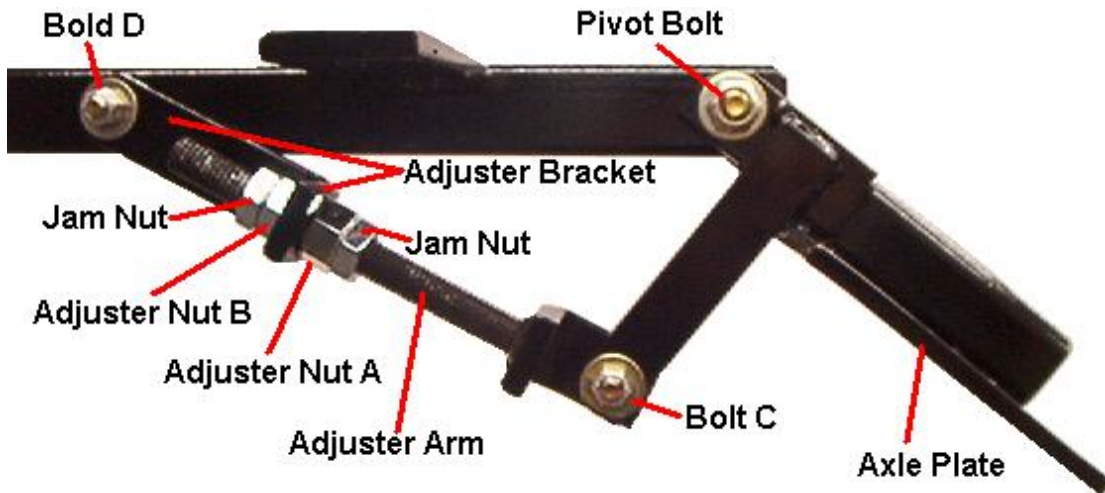
- 1) Loosen jam nuts
- 2) Shorten adjuster arm by turning adjuster nut **A** toward bolt **C** desired amount.
- 3) Turn adjuster nut **B** until it tightens against adjuster bracket and adjuster nut **A**
- 4) Tighten nuts **A** and **B** and jam nuts

**Lengthening** the adjuster arm **lowers** the trike wheels and places more of the weight of your motorcycle on the trike wheels. This gives a firmer ride and increases handling/cornering.

- 1) Loosen jam nuts
- 2) Lengthen adjuster arm by turning adjuster nut **B** toward bolt **D** desired amount.
- 3) Turn adjuster nut **A** until it tightens against adjuster bracket and adjuster nut **B**
- 4) Tighten nuts **A** and **B** and jam nuts

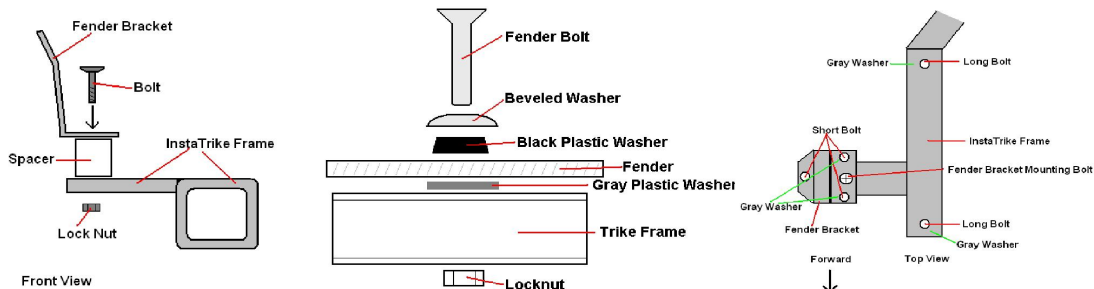
If necessary the pivot bolt and bolts C and D and be loosened for adjustment  
***Be certain to retighten all bolts after adjustment.***

***NOTICE: Check all bolts and nuts periodically for tightness***  
***NOTICE: Be sure motorcycle is level after adjustment.***



## Fender Installation Instructions *(12 Inch wheel only)*

- 1) Attach fender brackets to trike frame with spacers *BETWEEN* fender bracket and frame. Tighten.  
**NOTE: Leave fender bolts loose until all bolts are inserted.**
- 2) Place gray plastic washers between fender and trike frame/fender bracket. (4 washers each side)
- 3) Place fender on frame. Carefully align mounting holes.
- 4) Insert long bolts first. (2 each side)
- 5) Insert short bolts second. (3 each side) *Insert top bolt first.*
- 6) Carefully tighten bolts. Use care not to over tighten.



## Reflector Mounting Instructions

- 1) Be sure fender is clean and free from dust  
*Do not apply reflectors in direct sunlight or on a hot surface*
- 2) Remove backing from reflector and carefully position on fender.  
*See Diagram Below*

***Lightly spraying back of reflectors with a mild solution of water or Windex will allow easier positioning. Allow reflectors at least one hour to dry before riding if using this method.***

